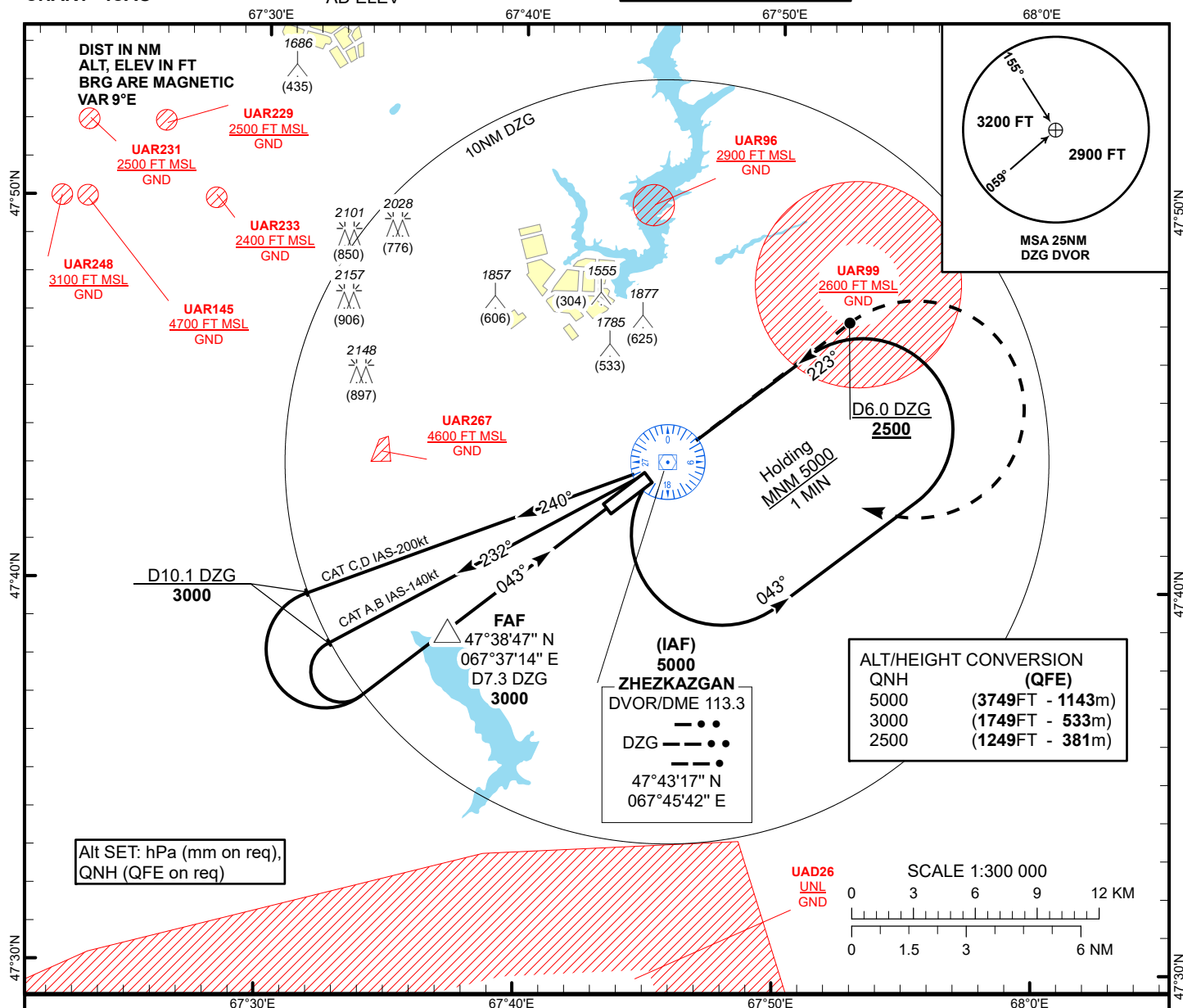


INSTRUMENT  
APPROACH  
CHART - ICAO

AERODROME ELEV 1251 FT  
HEIGHTS RELATED TO  
AD ELEV

ZHEZKAZGAN TOWER 127.1  
ZHEZKAZGAN ATIS (EN) 131.4  
ZHEZKAZGAN ATIS (RU) 122.4

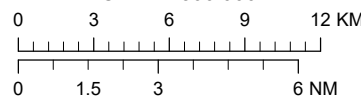
ZHEZKAZGAN  
VOR/DME Z  
RWY 04



Alt SET: hPa (mm on req),  
QNH (QFE on req)

| ALT/HEIGHT CONVERSION |                  |
|-----------------------|------------------|
| QNH                   | (QFE)            |
| 5000                  | (3749FT - 1143m) |
| 3000                  | (1749FT - 533m)  |
| 2500                  | (1249FT - 381m)  |

SCALE 1:300 000



TRANSITION ALT  
10000

3000

FAF  
D7.3 DZG

PDG 5.2% (3.0°)  
043°

MAPt  
D2.0 DZG

043°

ELEV 1251

THR RWY 04

MISSED APPROACH

Climb on track 043° to 2500 or above  
outbound to D6.0 DZG, turn RIGHT  
to DZG. Climb initially to 3000,  
then as directed.

**RADIO FAILURE:** in the  
case of RCF climb to 5000 to DZG  
and join to holding pattern. Missed  
approach turn speed limited  
to 250kt IAS maximum.

| Aircraft Category                |         | A         | B         | C         | D         | DIST THR | 5.4  | 5    | 4    | 3    | 2    | 1    |
|----------------------------------|---------|-----------|-----------|-----------|-----------|----------|------|------|------|------|------|------|
| Straight-in<br>Approach<br>OCA/H |         |           |           |           |           | DME DZG  | 7.3  | 6.9  | 5.9  | 4.9  | 3.9  | 2.9  |
|                                  | VOR/DME | 1530(280) | 1530(280) | 1530(280) | 1530(280) | ALTITUDE | 3000 | 2892 | 2574 | 2255 | 1937 | 1618 |
|                                  |         |           |           |           |           | HEIGHT   | 1749 | 1641 | 1323 | 1004 | 686  | 367  |

| Aerodrome<br>Operating Minima<br>(MDH ft x RVR(CMV)) | VOR/DME |  |  |  |  | GS                    | Kt      | 80   | 100  | 120  | 140  | 160  | 180  |
|--|---------|--|--|--|--|-----------------------|---------|------|------|------|------|------|------|
|  |         |  |  |  |  | FAF-MAPt 5.3NM        | min:sec | 3:59 | 3:11 | 2:39 | 2:16 | 1:59 | 1:46 |
|  |         |  |  |  |  | Rate of descent(5.2%) | ft/min  | 420  | 530  | 640  | 740  | 850  | 960  |

ZHEZKAZGAN  
VOR/DME Z

AERONAUTICAL DATA TABULATION

| VOR approach to RWY04 from DVOR/DME DZG |                                  |
|---|----------------------------------|
| Fix/point                               | Coordinates                      |
| (IAF) DVOR/DME DZG                      | 47° 43' 17.1"N 067° 45' 41.7"E   |
| (FAF) D7.3 DZG                          | 47° 38' 46.7"N 067° 37' 14.0"E   |
| THR RWY 04                              | 47° 42' 06.51"N 067° 43' 29.14"E |
| Final approach descent angle is 3°      |                                  |